

AMISH COUNTRY GAZEBOS

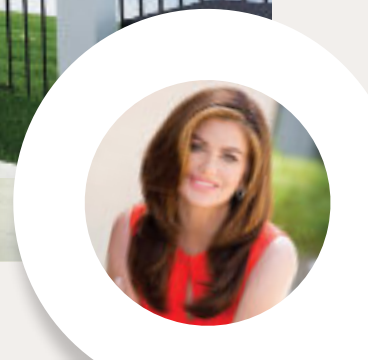
# Aluminum Pergolas



10'x16' Operable (Roof louvers that open & close) – Classic Style – White



12'x20' Fixed (Roof louvers do not move) – Classic Style – White



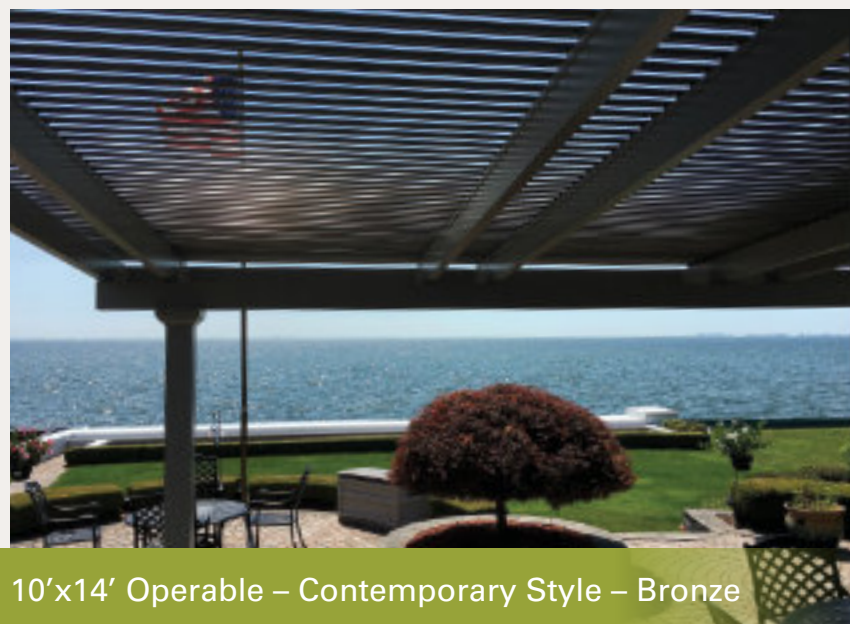




14'x18' Fixed – Classic Style – Sandstone  
Optional upgrade: Roman Columns



10'x10' Operable – Capri Style – White



10'x14' Operable – Contemporary Style – Bronze

## Aluminum Pergolas

For years, home owners and contractors have been requesting **ALUMINUM PERGOLAS** from Amish Country Gazebos. We invite you to consider these 7 reasons for upgrading to an **ALUMINUM PERGOLA**, especially one that is “operable”:

1. *Operable roof system with moveable roof louvers that close for water-tight rain protection.*
2. *Exclusive snap-fit construction for easy-to-assemble kit with helpful assembly manual and videos.*
3. *Electro-static paint finish that provides a high tech maintenance-free pergola, for life!*
4. *Heavy-duty fully extruded aluminum for superior strength up to 180 MPH wind load.*
5. *Caste aluminum decorative bases and crowns on each 6" x 6" Florentine Post.*
6. *Engineered drawings so you can easily secure a permit if needed.*
7. *Lifetime transferable warranty!*

Call one of our capable designers today to guide you through the simple 4-step process of designing one of the highest quality pergolas in the world, just for you!

**1-800-700-1777**



**Made in the USA!**



[www.AmishGazebos.com/aluminum-pergolas](http://www.AmishGazebos.com/aluminum-pergolas)



10'x18' Operable – Classic Style – Sandstone



16'x16' Operable – Classic Style – Bronze





Classic



Contemporary



Capri

## HOW TO DESIGN YOUR ALUMINUM PERGOLA IN 4 EASY STEPS:

(Please circle your selection and write in the size.)

- |                       |             |                 |       |
|-----------------------|-------------|-----------------|-------|
| 1. Choose your style  | Classic     | Contemporary    | Capri |
| 2. Choose your color  | Bronze      | Sandstone       | White |
| 3. Choose your size   | ____ x ____ |                 |       |
| 4. Select louver type | Fixed       | <b>Operable</b> |       |

Style Louver	Classic Fixed	Classic Operable	Contemporary Fixed	Contemporary Operable	Capri Fixed	Capri Operable	**On Site Assembly
10'x10'	\$6,995	\$11,789	\$8,149	\$12,939	\$5,995	\$9,495	\$1,680
10'x12'	\$7,989	\$12,519	\$9,139	\$13,709	\$6,495	\$9,995	\$1,860
10'x14'	\$8,429	\$14,219	\$9,639	\$15,449	\$6,995	\$10,995	\$2,060
10'x16'	\$9,395	\$15,439	\$10,599	\$16,669	n/a	n/a	\$2,270
10'x18'	\$9,849	\$16,689	\$11,099	\$17,949	n/a	n/a	\$2,485
10'x20'	\$10,839	\$17,429	\$12,089	\$18,719	n/a	n/a	\$2,680
12'x12'	\$8,559	\$13,879	\$9,839	\$15,199	\$6,995	\$10,995	\$2,060
12'x14'	\$9,049	\$15,969	\$10,379	\$17,299	\$7,395	\$11,995	\$2,325
12'x16'	\$10,149	\$17,349	\$11,479	\$18,719	\$7,695	\$12,995	\$2,580
12'x18'	\$10,629	\$18,869	\$12,019	\$20,259	n/a	n/a	\$2,835
12'x20'	\$11,729	\$19,699	\$13,119	\$21,119	n/a	n/a	\$3,195
12'x22'	\$13,039	\$21,369	\$14,409	\$22,779	n/a	n/a	\$3,335
12'x24'	\$13,529	\$23,479	\$15,529	\$24,919	n/a	n/a	\$3,460
14'x14'	\$10,359	\$17,329	\$11,129	\$18,799	n/a	n/a	\$2,580
14'x16'	\$10,889	\$18,899	\$13,149	\$20,519	n/a	n/a	\$2,890
14'x18'	\$12,259	\$20,599	\$13,719	\$22,119	n/a	n/a	\$3,095
14'x20'	\$13,459	\$21,519	\$14,929	\$23,079	n/a	n/a	\$3,460
14'x22'	\$13,989	\$23,289	\$15,495	\$24,879	n/a	n/a	\$3,775
14'x24'	\$15,189	\$25,669	\$16,729	\$27,239	n/a	n/a	\$3,995
16'x16'	\$12,009	\$21,119	\$12,139	\$22,749	n/a	n/a	\$3,235

Larger sizes are available – up to 24'x24'. Please call 1-800-700-1777 for details.

\*\*On site assembly offered in various locations. Call for details. Mileage fees may apply.